

Cylinder Pressure Sensor CPS-01

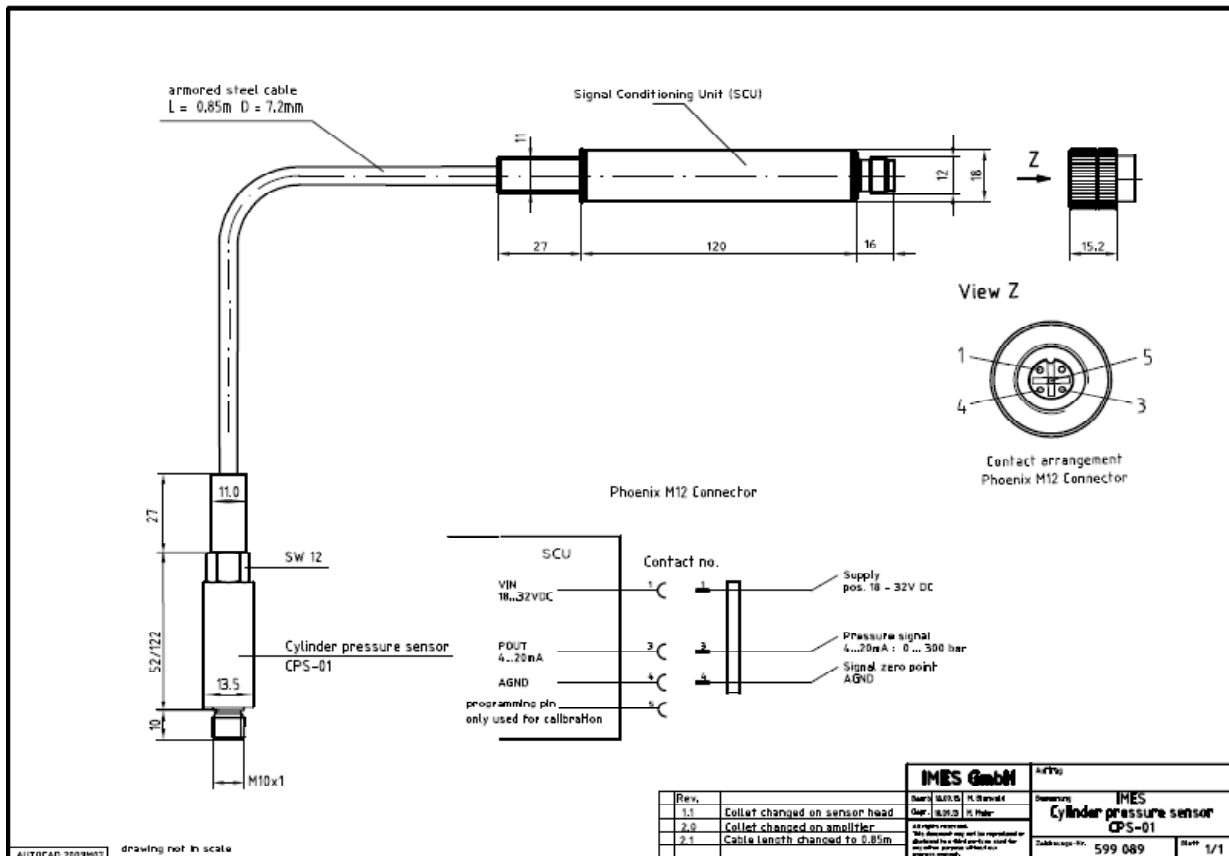
for pressure control on Diesel and Gas Engines

- High Medium temperature
- Long Life
- Designed life expectancy of 16.000 h @ 1500 rpm
- Small dimension



Application:

- Internal combustion engines
- Diesel, natural gas and alternative fuels
- Natural gas compressors
- Marine engines





Optimum sensor life is achieved at an average temperature at the measuring element of 200 - 250 °C.

This can always be achieved with a set-back location so that good heat dissipation to colder components is possible.

The life expectancy of the sensor has been designed so that the life of 16.000 h or more can be achieved in a gas engine at 1500 rpm.

Technical-data Cylinder pressure sensor CPS-01

Measuring range pressure	0...300 bar, others on request
Overload pressure static	800 bar
Load cycles	$\geq 10^8$
Frequency range	2 kHz (others on request)
Thermal shock 1500 RPM pmi=9bar	$\leq +/-0,5$ bar
Max. temperature at measuring cell	300 °C
Temperature range SCU	-40 °C...75 °C
Supply voltage	18...32 VDC
Output signal pressure	4...20 mA
Electrical connector	Plug DINM12
Thread	M10 x 1
Type of protection	IP 65
Dimension sensor	52 mm (122mm) , \varnothing 13,5 mm
Dimension electronic	115 x 18 mm
Tightening torque	15 Nm
Weight incl. Electronic	150 g

<u>Scope of supply</u>	<u>Part no.</u>	<u>Accessories</u>	<u>Part-No.</u>
CPS-01 (52 mm)	IW-5912	Cable length	
CPS-01 (122mm)	IW-5913	5, 10, 15, 20, 25m	IW 4110...14
Gasket	IW-4104		