

Cylinder Pressure Sensor HTT-04CA

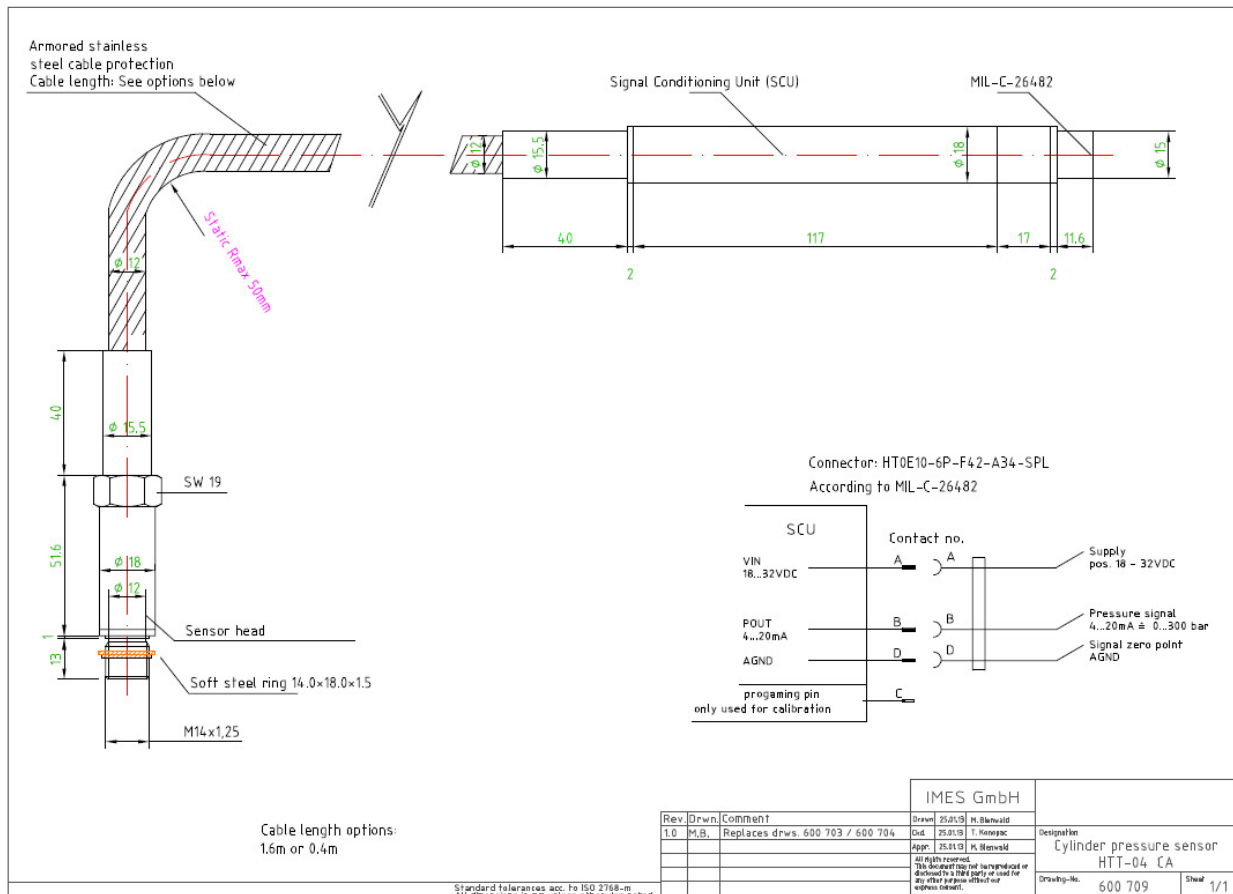
for On-line Combustion control

- 16,000 hour design life
- Digital electronic with event storing
- Very good thermodynamic performance
- Suitable for knock detection
- Marine classification
- CSA Class I, Div.2, Group C and D
- ATEX type approval



Application:

- Closed loop cylinder pressure control on internal combustion engines
e.g. knock detection, cylinder balancing, MIP calculation, etc.



General specifications

Degree of protection	IP 67 (EN 60529)
CE approval	2004/1008/EG EN 61000-6-2 EN 61000-6-4 EN 61326-1
ATEX type approval	Group II, Category 3G
CSA approval	Class I, Div.2, Group C and D
Marine qualification	
Bureau Veritas	22266/A0 BV
Desk Norske Veritas	A-11717
Germanischer Lloyd	12601-10HH
A. Bureau. of shipping	10-HG638434-PDA
Lloyd's Register	ETS 25706-11

Optimum sensor life is achieved when the average temperature at the measuring element is 200 - 250 °C.

The sensor should be installed as close to the combustion chamber as possible to minimize pipe oscillation and sensor temperature.

The HTT-04CA sensor has been designed to achieve life of 16,000 h or more in a gas engine when installed per imes' recommendations.

Technical-data Cylinder pressure sensor HTT-04CA

Measuring range pressure	0...300 bar
Over pressure static	800 bar
Frequency range	2 kHz (others on request)
Thermal shock 1500 RPM pmi=9bar	< +/- 0,5 bar
Accuracy	≤1% Full scale
Max. temperature at measuring cell	300 °C
Temperature range of SCU	-40 °C ... + 75 °C
Supply voltage	18...32 VDC
SCU current consumption	≤ 50 mA (continuous operation); 250 mA (switch-on peak)
Output signal range	4...20 mA
Electrical connector	HT0E10-6P-F42-A34-SPL acc.to MIL-C-26482
Thread	M14 x 1,25
Type of protection	IP 65
Dimension sensor	52 mm , Ø 18 mm
Dimension electronic	138 mm x 18 mm
Tightening torque	25 Nm
Weight incl. electronic	346 g (0,4 m cable), 563 g (1,6m cable)

Type

HTT-04CA (0,4m cable)
HTT-04CA (1,6m cable)

IMES type

IW 6040
IW 6043